

PLAT of a survey of a 19975.45 gross acre tract of land, SAVE AND EXCEPT a total of 295.01 acres, leaving a total of 19680.44 net acres out of a tract described in Vol. 190, P. 680, Official Public Records, Jeff Davis County, Texas

19975.45 gross acres

19680.44 net acres

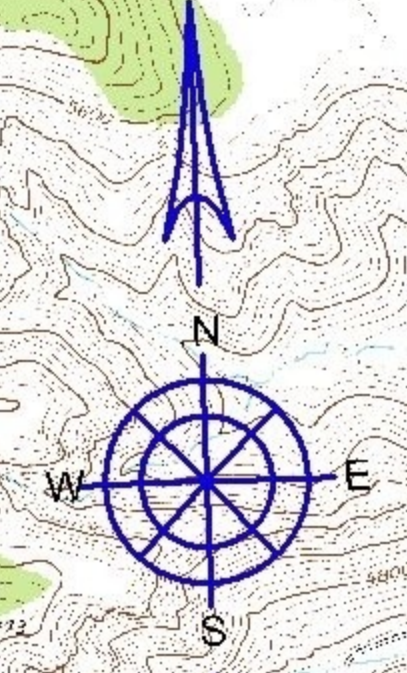
Blk. 57 Tsp. 9

T. & P. Ry. Co.

Blk. 57 Tsp. 10

G.C. & S.F. Ry. Co. Block 357

MADERA CANYON RANCH
19,680.44 ACRES



- BEARINGS AND DISTANCES ARE BASED ON THE TEXAS COORDINATE SYSTEM, CENTRAL ZONE, NAD 1983
- CONVERSION FACTOR: 0.980266
- ORIGINAL MONUMENTS FOUND
- MONUMENTS CALLED FOR BY OTHERS
- WOODEN FENCE POSTS
- 1/2" IRON ROD AND CAP MARKED "WALKER 425 SET"

Surveyed by: Walker, Robert L. (Title Company) and Conrad Appleton (Title Company) Professional Land Surveyor #4425
 Licensed State Land Surveyor
 Date: August 12, 2007
 Revised: October 4, 2007

MADERA CANYON RANCH

Roads
 Features

- SPRINGS
- SUBMERSIBLE PUMPS
- WATER STORAGE
- WATER TROUGHS
- WINDMILLS

Fence Lines
 MADERA CANYON

Gibbs2updated.platcadfile.dwg

- 1
- 14
- 94

